

## Registered Actively Seeking Work July 2014

Statistics Unit: [www.gov.je/statistics](http://www.gov.je/statistics)

### Summary

On 31 July 2014:

- on a **seasonally adjusted**<sup>1</sup> basis, the total number of people registered as actively seeking work (ASW) in Jersey was<sup>2</sup>:
  - 10 lower than a month earlier, June 2014;
  - 20 lower than the average for the preceding three months;
- the seasonally adjusted ASW total was the lowest for two and a half years (December 2011);
- the **non-seasonally adjusted ASW total** was 1,520; this latest total is 10 higher than in the previous month (June 2014), essentially remaining at the lowest level since December 2011;
- **long-term ASW** (registered for more than twelve months) accounted for a sixth of total ASW; the number of long-term ASW (240 individuals) was 10 lower than the previous month (June 2014) and the lowest recorded for more than three years, since June 2011;
- 260 **teenagers aged 16-19 years** were registered as ASW, 70 more than the previous month and reflecting the registering of school leavers. 80 teenagers were on the Advance to Work scheme.

### Introduction

Data on people registered as actively seeking work in Jersey is compiled and administered by the Social Security Department. The Statistics Unit independently analyses this anonymised data and publishes a monthly report<sup>3</sup>.

When interpreting the numbers presented, it should be kept in mind that there is no legal requirement for all unemployed residents of Jersey to register as actively seeking work (ASW) with the Social Security Department. The numbers shown constitute an informative set of indicators of the level of individuals actively seeking work in the Island at a given point in time.

The internationally comparable unemployment rate (as defined by the International Labour Organisation, ILO) includes people who are registered and also those who are not registered as unemployed and seeking work. The ILO unemployment rate for Jersey is measured by the Annual Social Survey and the Census; in recent years, the ILO unemployment rate for Jersey has been:

- 4.7% in March 2011, measured by the 2011 Jersey Census; this unemployment rate corresponded to 2,570 people being unemployed and looking for work in March 2011;
- 5.7% in June 2013, measured by the 2013 Jersey Annual Social Survey; this unemployment rate corresponded to 3,200 people being unemployed and looking for work in June 2013.

<sup>1</sup> Seasonal adjustment is a statistical technique which enables examination of the underlying behaviour in a series of data by removing variations associated with the time of year, e.g. Christmas, Easter, academic year.

<sup>2</sup> ASW numbers presented in this report are rounded independently to the nearest 10.

<sup>3</sup> Up until March 2014 the end-of-month ASW figures published by the Statistics Unit were based on administrative data compiled by the Social Security Department on (or close to) the 15<sup>th</sup> of the following month. From the April 2014 report onwards the end-of-month figures published are based on data compiled on (or close to) the 1<sup>st</sup> of the following month. Moving the data compilation date forward by two weeks will enable earlier publication of the monthly figures. It should be noted that the earlier data compilation date introduces a small upward systematic shift (of approximately 20) in the number of people classified as ASW at each end-of-month.

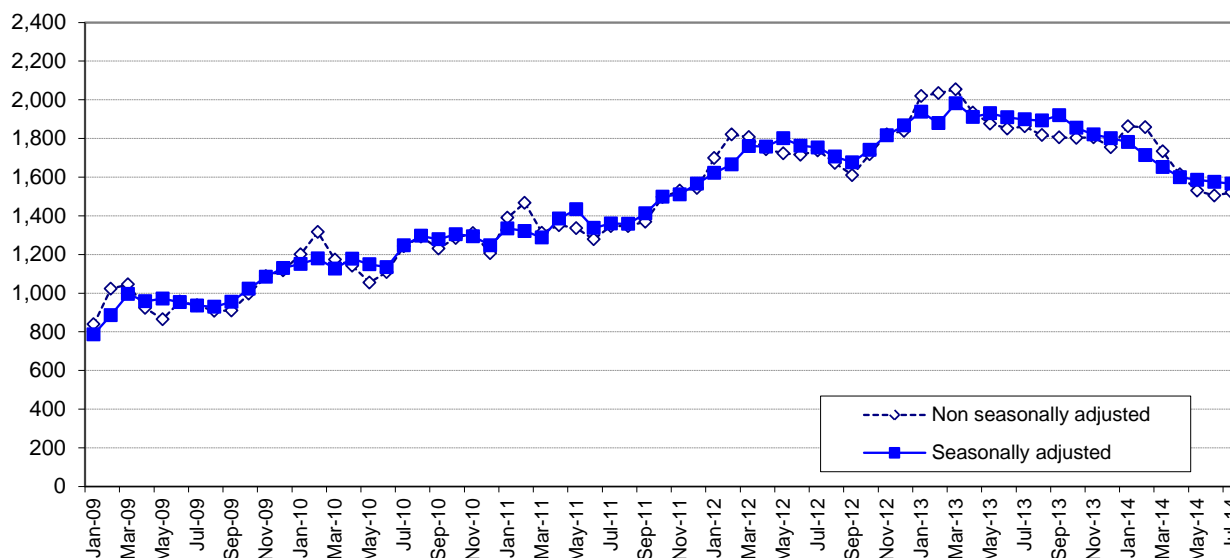
## Registered Actively Seeking Work

On 31 July 2014, 1,520 people were registered with the Social Security Department as actively seeking work (ASW). Almost three-quarters (73%) of individuals registered as ASW on this date (corresponding to 1,110 people) were receiving Income Support<sup>4</sup>.

Figure 1 shows the total number of people registered as ASW at the end of each month since January 2009 (monthly data are shown in Appendix Table A1). The total number registered in July 2014 was 10 higher than in the previous month (June 2014), which had recorded the lowest total for more than two years (since October 2011), and 340 lower than a year earlier (July 2013).

The latest month saw total ASW remaining at essentially the lowest level seen for two and a half years, since December 2011.

**Figure 1 – Total number of individuals registered as ASW, Jan 2009 – Jul 2014**



The seasonally adjusted series of the total registered as ASW, in which seasonal and calendar effects are removed, is also shown on Figure 1. From this perspective, the total number of people registered as ASW in Jersey in July 2014 was:

- 10 lower than a month earlier, June 2014;
- 20 lower than the mean for the preceding three-month period, April 2014 to June 2014;
- the lowest for two and a half years, since December 2011.

## Registered ASW by age and gender

On 31 July 2014, over a quarter (28%) of people registered as ASW were under the age of 25 years; around one in six (17%) of the total were teenagers aged 16-19 years.

Figure 2 shows the numbers registered as ASW by age of individuals in each of the last five months, from March 2014 to July 2014.

In the latest month, most age groups either remained essentially unchanged or recorded small decreases (of around 10 or 20) in the number of people registered as ASW compared with the previous month. In contrast, the number of 16 to 19 year olds registered as ASW increased by 70 in the latest month.

<sup>4</sup> The total number of adults receiving Income Support and not working will be greater than this figure, which represents the number of people receiving Income Support who were registered as ASW on 31 July 2014.

**Figure 2 – Individuals registered as ASW by age, Mar 2014 – Jul 2014**

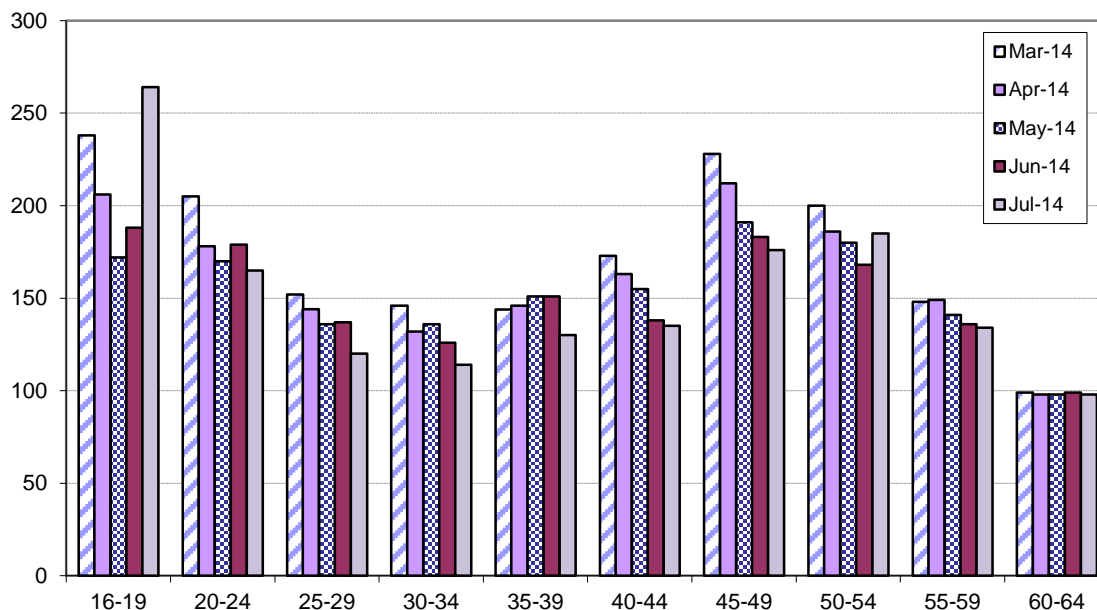
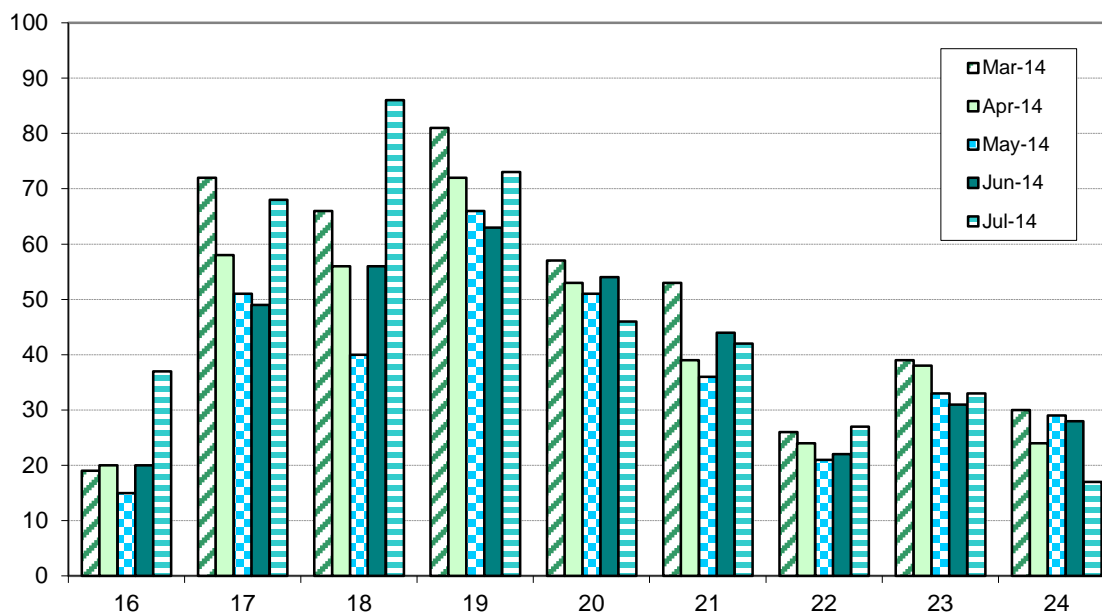


Figure 3 shows the age distribution for people under 25 years of age who were registered as ASW in the latest five months, from March 2014 to July 2014.

260 teenagers (aged 16-19 years) were registered as ASW at the end of July 2014, 70 more than the previous month (June 2014). The increase in the number of teenagers in the latest month reflects the registering of school leavers as ASW seen each July in recent years.

Of those teenagers registered as ASW at the end of July 2014, 80 were on the Advance to Work scheme, 20 more than at the end of the previous month (June 2014).

**Figure 3 – Individuals under the age of 25 registered as ASW, Mar 2014 – Jul 2014**

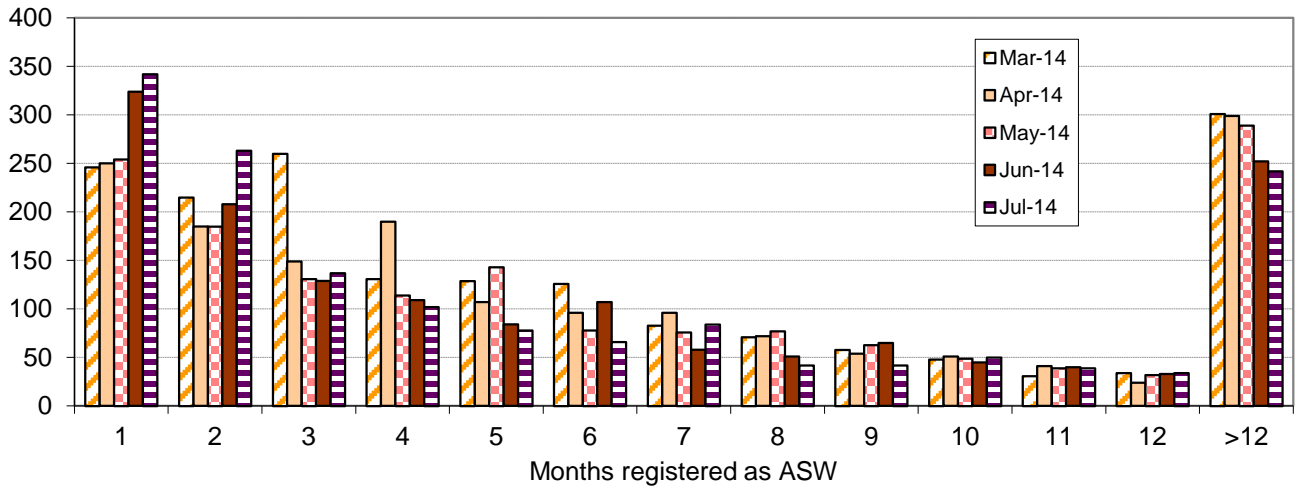


The number of men registered as ASW has decreased in each of the last six months (see Appendix) and the number recorded in the latest month (July 2014) was the lowest for three years, since June 2011. In contrast the number of women registered as ASW has remained relatively flat throughout 2014.

### Duration as ASW

Almost half (49%) of all people registered as ASW on 31 July 2014 had been registered for three months or less – see Figure 4.

**Figure 4 – Registered ASW by length of period registered (months), Mar 2014 – Jul 2014**



340 people had registered as ASW in the latest month, 20 more than in June 2014. The latest number of new registrants was at a similar level as in the corresponding month of the two previous years, July 2012 and July 2013.

### Long-term ASW

On 31 July 2014, there were 240 people who had been registered as ASW for more than twelve months, accounting for a sixth (16%) of total ASW.

The latest number of long-term ASW was 10 fewer than in the previous month (June 2014), and was the lowest number recorded for three years (since June 2011) - see Figure 5.

**Figure 5 – Long-term ASW, Sept 2009 – Jul 2014**

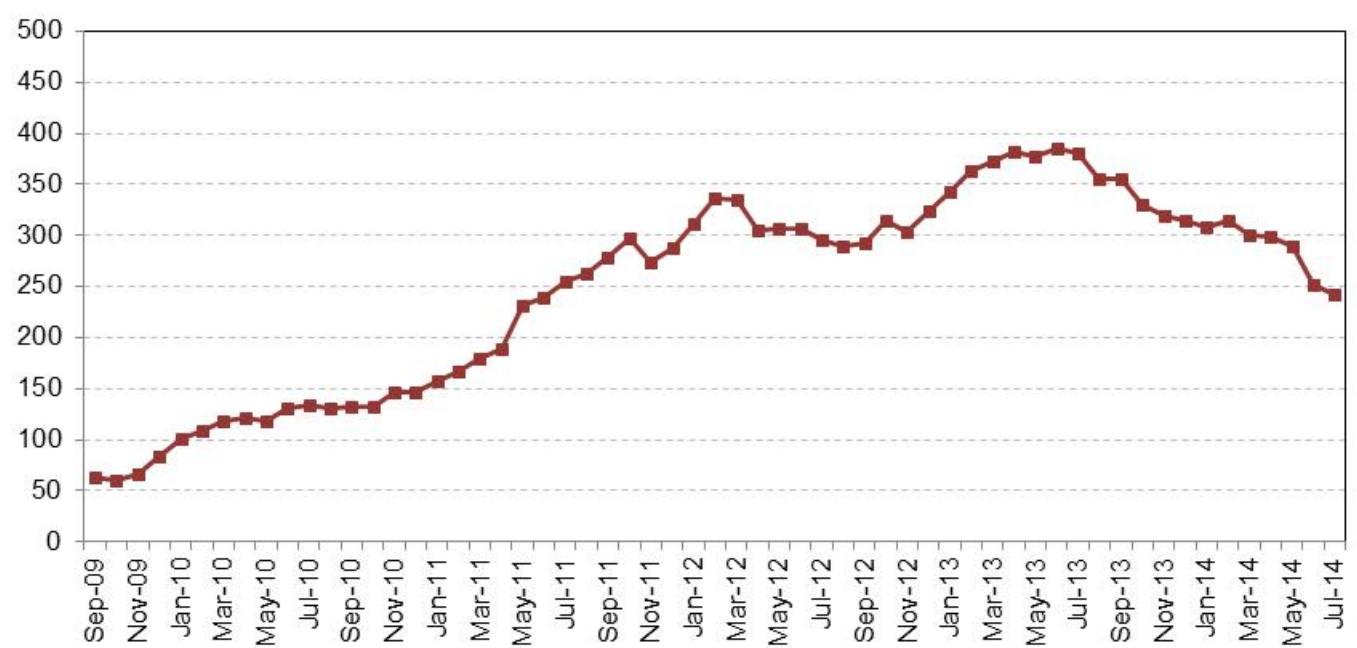
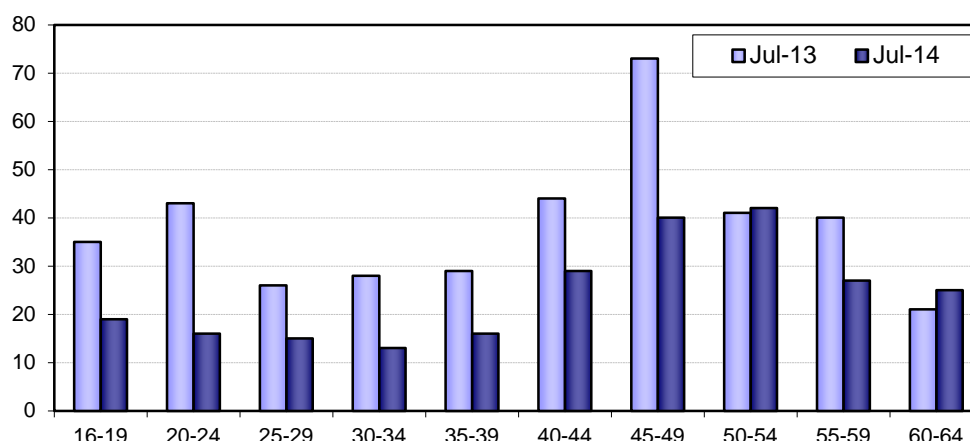


Figure 6 shows the age distribution of the long-term ASW in July 2014. Most age groups have seen a decrease in the number of long-term ASW during the past twelve months.

**Figure 6 – Long-term ASW by age, Jul 2013 and Jul 2014**

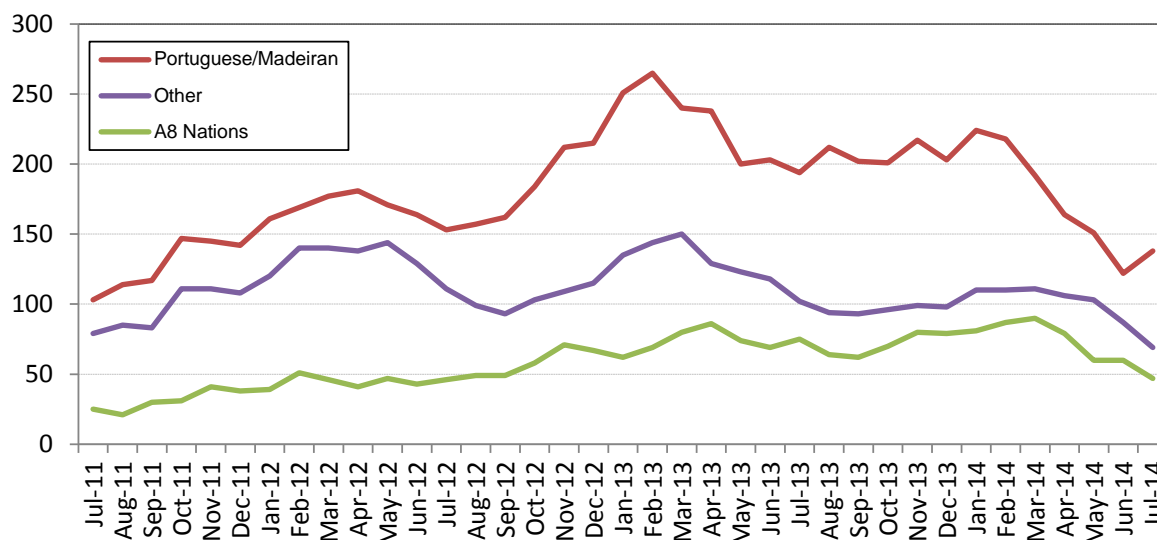


In July 2014 there were 35 people under 25 years of age who had been registered as ASW for more than a year, accounting for a sixth (17%) of the total long-term ASW.

### Registered ASW by Nationality

On 31 July 2014, more than four-fifths (82%) of all people registered as ASW were of British/Jersey nationality<sup>5</sup>. The number of individuals registered as ASW for nationalities other than British/Jersey since mid-2011 is shown in Figure 7.

**Figure 7 – Individuals registered as ASW by nationality, Jul 2011 – Jul 2014**



On 31 July 2014 there were:

- 140 individuals of Portuguese/Madeiran nationality registered as ASW, 20 more than the previous month (June 2014), which had recorded the lowest number for this group since September 2011; and 50 fewer than the corresponding month of 2013;
- 50 individuals from the EU Accession (A8)<sup>6</sup> nations were registered as ASW, 10 fewer than the previous month (June 2014) and 30 fewer than the corresponding month of 2013.

<sup>5</sup> Nationality recorded by the Social Security Department for the purpose of registering as ASW is self-reported.

<sup>6</sup> The eight countries which joined ("gained accession to") the European Union in May 2004 were: the Czech Republic, Estonia, Hungary, Latvia, Lithuania, Poland, Slovakia and Slovenia.

## Industry

Individuals working in some industries of the economy, notably in the Finance sector, often seek employment through private agencies and do not register with the Social Security Department. Such industries will, therefore, tend to be under-represented in the ASW numbers.

The last industry of employment was recorded for around nine out of ten people registered as ASW on 31 July 2014:

- More than one in five (22%) were previously employed in 'Retail and Wholesale, Motor repairs and sales';
- Almost one in five (19%) were previously employed in 'Miscellaneous professional & domestic services';
- one in eight (12%) were previously employed in 'Hotels, restaurants, pubs and clubs';
- fewer than one in ten (8%) were previously employed in 'Construction and allied trades'.

## Notes

The numbers of people registered as ASW include people who are on the Advance to Work, Advance Plus and Workwise schemes. The ASW total will also include individuals who are working fewer than the 35 hours per week required under the terms of Income support (see Annex); such individuals will simultaneously be working and actively seeking work.

When placing the figures contained in this report in a longer term historical context it should be recognised that there have been significant changes in the criteria relating to registered ASW in Jersey in recent years. In particular, the introduction of Income Support in 2008 led to greater numbers of individuals who were actively seeking work being included in the registered figures.

People who are registered as actively seeking work receive the support of one of the government employment schemes which come under the administration of Back to Work. They are:

- Advance to Work – for jobseekers aged 16 – 19 years;
- Advance Plus – for jobseekers with an industry-specific interest aged 20 – 65 years;
- Workwise – for jobseekers with special employment needs;
- Work Zone – for all registered jobseekers;
- Long Term Unemployment Unit – for jobseekers who have been ASW for 52 weeks or more.

In addition to the development and expansion of these schemes, Back to Work is responsible for:

- the Employment Grant, Hospitality Incentive and Youth Incentive;
- a dedicated Employer Engagement team;
- industry and employer specific initiatives.

The aim of Back to Work is to increase access to job opportunities for locally qualified people who are registered as actively seeking work by supporting jobseekers and building a partnership with employers to provide sustainable job opportunities.

## ASW registered underemployment

Individuals who are working fewer hours than they would like or who would like to change their current working situation are classified as underemployed. The International Labour Organisation (ILO) provides two definitions of underemployment<sup>7</sup>:

- *time related underemployed*, which is due to insufficient hours of work;
- *inadequate employment situations*, which are due to other limitations in the labour market which limit the capacities and well-being of workers.

In Jersey, individuals who are in receipt of Income Support are required to work at least 35 hours per week, unless exempt from full-time work; those who do not meet this requirement must register as Actively Seeking Work. Hence, the ASW total figure includes individuals who are working less than the 35 hours per week required under the terms of Income support; such individuals will simultaneously be working and actively seeking work, and are classified as underemployed under the ILO definition of *time related underemployment*.

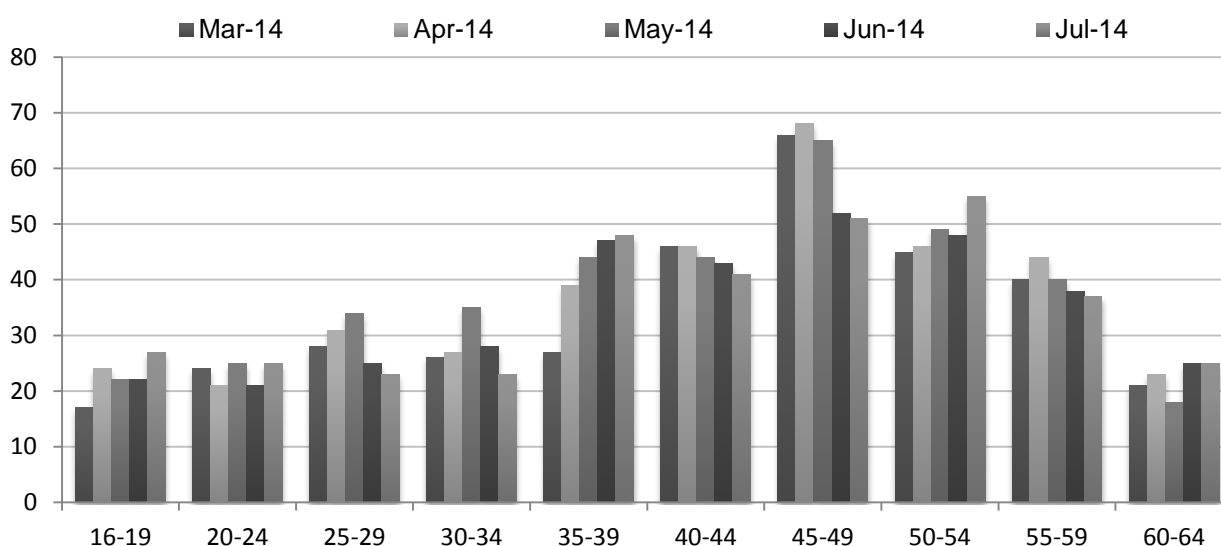
In July 2014, almost a quarter (24%) of all people registered as ASW were underemployed; that is, they were working less than 35 hours per week and were actively seeking more work. The numbers of such individuals in each month from July 2013 to July 2014 are shown in Table A1.

**Table A1 – Number of ASW registered underemployed, Jul 2013 – Jul 2014**

	Jul-13	Aug-13	Sept-13	Oct-13	Nov-13	Dec-13	Jan-14	Feb-14	Mar-14	Apr-14	May-14	Jun-14	Jul-14
Number of underemployed	350	360	350	360	380	370	350	370	340	370	380	350	360
Percentage of total ASW	19%	20%	19%	20%	21%	21%	19%	20%	20%	23%	25%	23%	24%

Figure A1 shows the age distribution of people registered as ASW underemployed; almost half (47%) were over the age of 45.

**Figure A1 - Age distribution of ASW registered underemployed, Mar 2014 – Jul 2014**



Of those people who were registered as ASW underemployed in July 2014:

- almost two-thirds (63%) were female;
- more than a quarter (28%) had been actively seeking work for more than a year;
- nine out of ten (91%) were claiming Income Support.

<sup>7</sup> International Labour Organisation: *Resolution concerning the measurement of underemployment and inadequate employment situations.*

## Appendix

### Number of individuals registered as ASW, Jun 2009 – Jul 2014<sup>8</sup>

		Male	Female	Total	Seasonally adjusted total
<b>2009</b>	Jun	630	330	960	950
	Jul	620	320	940	940
	Aug	580	320	910	930
	Sep	580	330	910	960
	Oct	650	350	1,000	1,020
	Nov	700	390	1,090	1,090
	Dec	700	420	1,120	1,130
	<b>2010</b>	Jan	770	440	1,200
Feb		810	510	1,320	1,180
Mar		720	450	1,170	1,130
Apr		710	430	1,140	1,180
May		670	390	1,060	1,150
Jun		690	420	1,110	1,130
Jul		760	490	1,240	1,250
Aug		810	490	1,290	1,300
Sep		770	460	1,230	1,280
Oct		840	450	1,290	1,300
Nov		870	440	1,310	1,290
Dec		800	410	1,210	1,250
<b>2011</b>	Jan	910	480	1,390	1,330
	Feb	960	510	1,470	1,320
	Mar	850	460	1,310	1,290
	Apr	870	490	1,350	1,390
	May	820	520	1,340	1,430
	Jun	780	500	1,280	1,340
	Jul	800	550	1,350	1,360
	Aug	820	530	1,350	1,360
	Sep	850	520	1,370	1,410
	Oct	920	570	1,500	1,500
	Nov	960	580	1,530	1,510
	Dec	960	580	1,540	1,570

		Male	Female	Total	Seasonally adjusted total
<b>2012</b>	Jan	1,050	650	1,700	1,620
	Feb	1,130	690	1,820	1,670
	Mar	1,100	700	1,810	1,760
	Apr	1,060	680	1,740	1,760
	May	1,040	680	1,720	1,800
	Jun	1,020	700	1,720	1,760
	Jul	1,020	720	1,740	1,750
	Aug	1,020	650	1,670	1,710
	Sep	970	650	1,610	1,680
	Oct	1,020	700	1,720	1,740
	Nov	1,090	730	1,820	1,820
	Dec	1,100	740	1,840	1,870
<b>2013</b>	Jan	1,210	810	2,020	1,940
	Feb	1,210	820	2,030	1,880
	Mar	1,230	820	2,050	1,980
	Apr	1,140	800	1,930	1,910
	May	1,080	800	1,880	1,930
	Jun	1,040	810	1,850	1,910
	Jul	1,030	840	1,860	1,900
	Aug	990	820	1,820	1,890
	Sept	1,000	800	1,810	1,920
	Oct	1,040	770	1,800	1,860
	Nov	1,060	750	1,810	1,820
	Dec	1,030	720	1,750	1,800
<b>2014</b>	Jan	1,090	770	1,860	1,780
	Feb	1,080	780	1,860	1,710
	Mar	980	760	1,730	1,650
	Apr	900	720	1,610	1,600
	May	840	700	1,530	1,590
	Jun	790	710	1,510	1,580
	Jul	780	740	1,520	1,570

<sup>8</sup> Numbers are rounded independently to the nearest 10; hence components may not sum to totals.